

## Solo Chess

**The rules** are:

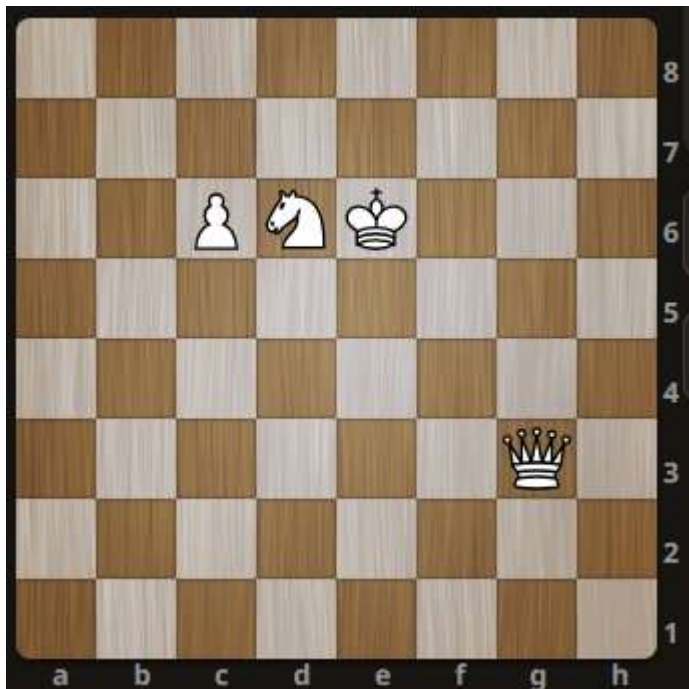
- Pieces move as standard chess pieces.
- You can perform **only** capture moves. Pawns only capture diagonally **forward**.
- You can move a piece no more than **twice**.
- You are NOT allowed to capture the king.
- The goal is to end up with one single piece (the king) on the board.

**Example:**

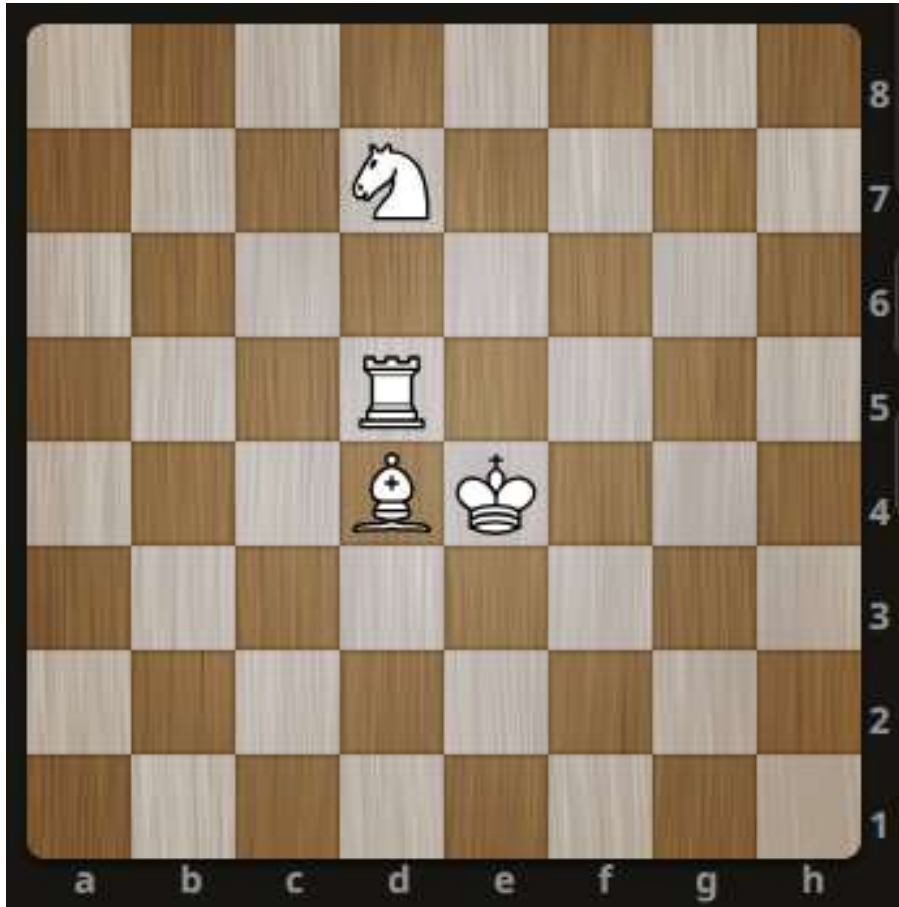
In this puzzle the solution is for the queen to capture the knight followed by king capturing the queen and then king capturing the pawn. For the purpose of the solution we will write the square where the piece moves from and moves to. It will look like this: **g3d6e6d6c6**

**IMPORTANT: for today's challenge only, use this form to submit your answer:**

<https://forms.gle/KbZRDpQ4cb4gqVso9>



Puzzle 1:



Puzzle 2:



Puzzle 3:

