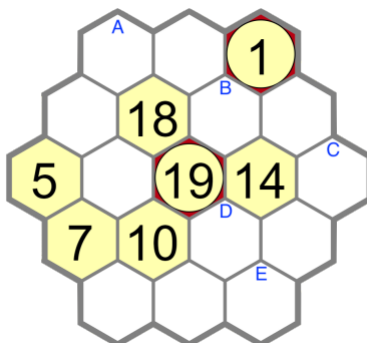
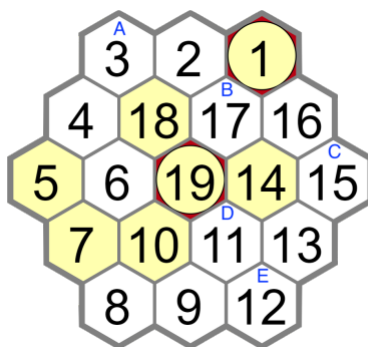


### 12 Days of ChrisMATH — Day 3

The aim of Hidato is to fill the cells with consecutive numbers from 1 to the highest number (the number of cells in the puzzle) so that consecutive numbers connect. In other words, 1 must be next to 2, which must be next to 3, which must be next to 4, and so on. For this challenge, submit your answer as a single number formed from the digits in cells ABCD... (in this order). For example, given this Hidato:



The solved puzzle would look like this:

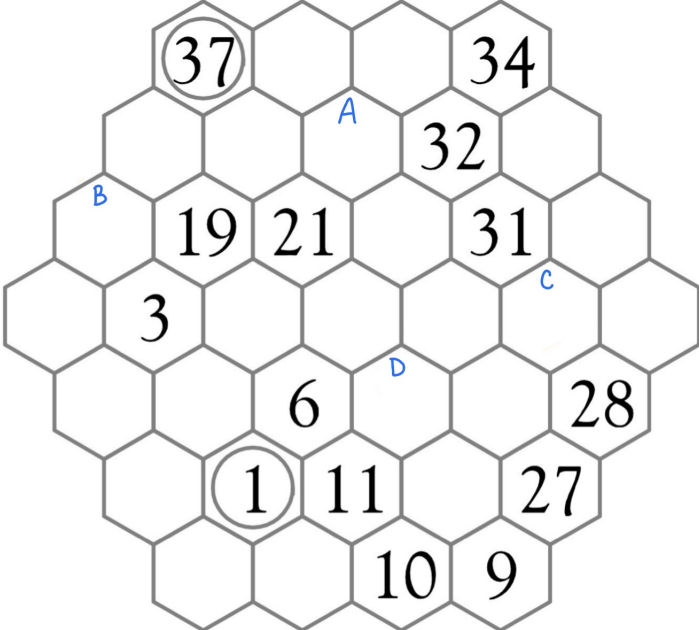


We get  $A = 3, B = 17, C = 15, D = 11, E = 12$ , so you would submit your answer as 317151112.

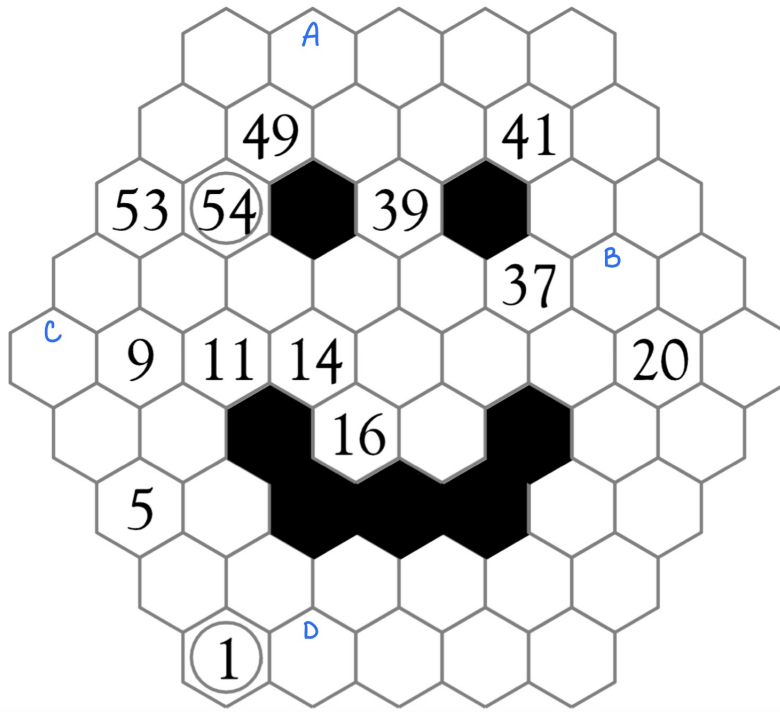
Note that in general, the letters need not correspond to increasing values.

Here are the puzzles!

Level 1:



Level 2:



Level 3:

